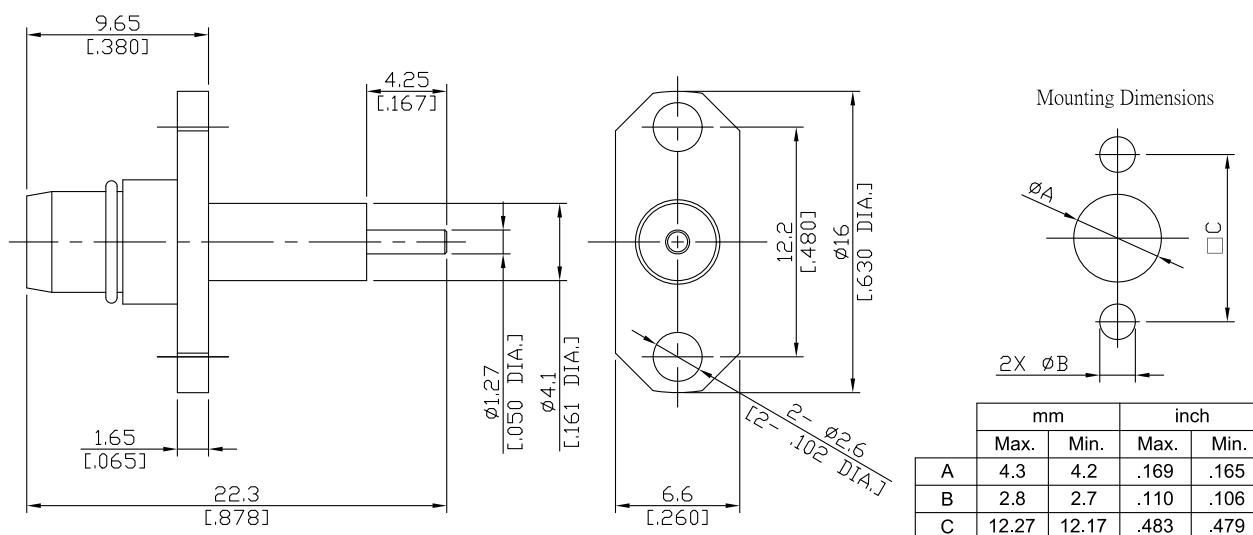


**BMA Plug (Male) Connector Solder Attachment 2 Hole Flange Mount  
Stub Terminal, 12.2mm (.480 inch) Hole Spacing DC-18GHz VSWR1.30**

**BMA1GTA50-2230A / 1X**



All dimensions are in mm [inch]

Tolerances according to DIN ISO 2768-mH

**Interface**

According to

MIL-STD-348B/321; IEC 60169-33

**Electrical Data**

Impedance	50 $\Omega$
Frequency	DC to 18 GHz
VSWR (Return Loss)	$\leq 1.30$ ( $\geq 17.69$ dB)
Insertion Loss	$\leq 0.07 \times \sqrt{F}$ (GHz) dB
Insulation Resistance	$\geq 5 \times 10^3$ M $\Omega$
Center Contact Resistance	$\leq 2$ m $\Omega$
Outer Contact Resistance	$\leq 2$ m $\Omega$
Test Voltage	1000 V rms
Working voltage	400 V rms
RF-leakage	$\geq 85$ dB up to 1 GHz

-VSWR in application depends decisive on PCB layout or cavity design-

**Material And Plating**

Piece Parts	Material	Plating
Centre contact	Brass	Gold plating (Non-magnetic nickel-phosphorus underplating)
Body	Stainless Steel	Passivated
Insulator	PTFE	
Gasket	Silicone Rubber	

**BMA Plug (Male) Connector Solder Attachment 2 Hole Flange Mount  
Stub Terminal, 12.2mm (.480 inch) Hole Spacing DC-18GHz VSWR1.30**

**BMA1GTA50-2230A / 1X**

**Mechanical Data**

Coupling Mechanisms	Slide-on
Mating Cycles	≥ 1000
Center Contact Captivation	≥ 27 N
Engagement Force	≤ 13.5 N
Disengagement Force	≥ 2 N
Centre Contact	Soldered
Terminal Type	Stub
Captivated Type	Mechanical

**Environmental Data**

Temperature Range	-65°C to +165°C
Thermal shock	MIL-STD-202, Meth. 107, Cond. B
Corrosion	MIL-STD-202, Meth. 101, Cond. B
Vibration	MIL-STD-202, Meth. 204, Cond. D
Shock	MIL-STD-202, Meth. 213, Cond. I
Moisture Resistance	MIL-STD-202, Meth. 106
RoHS	compliant

**Packing**

Single or 100